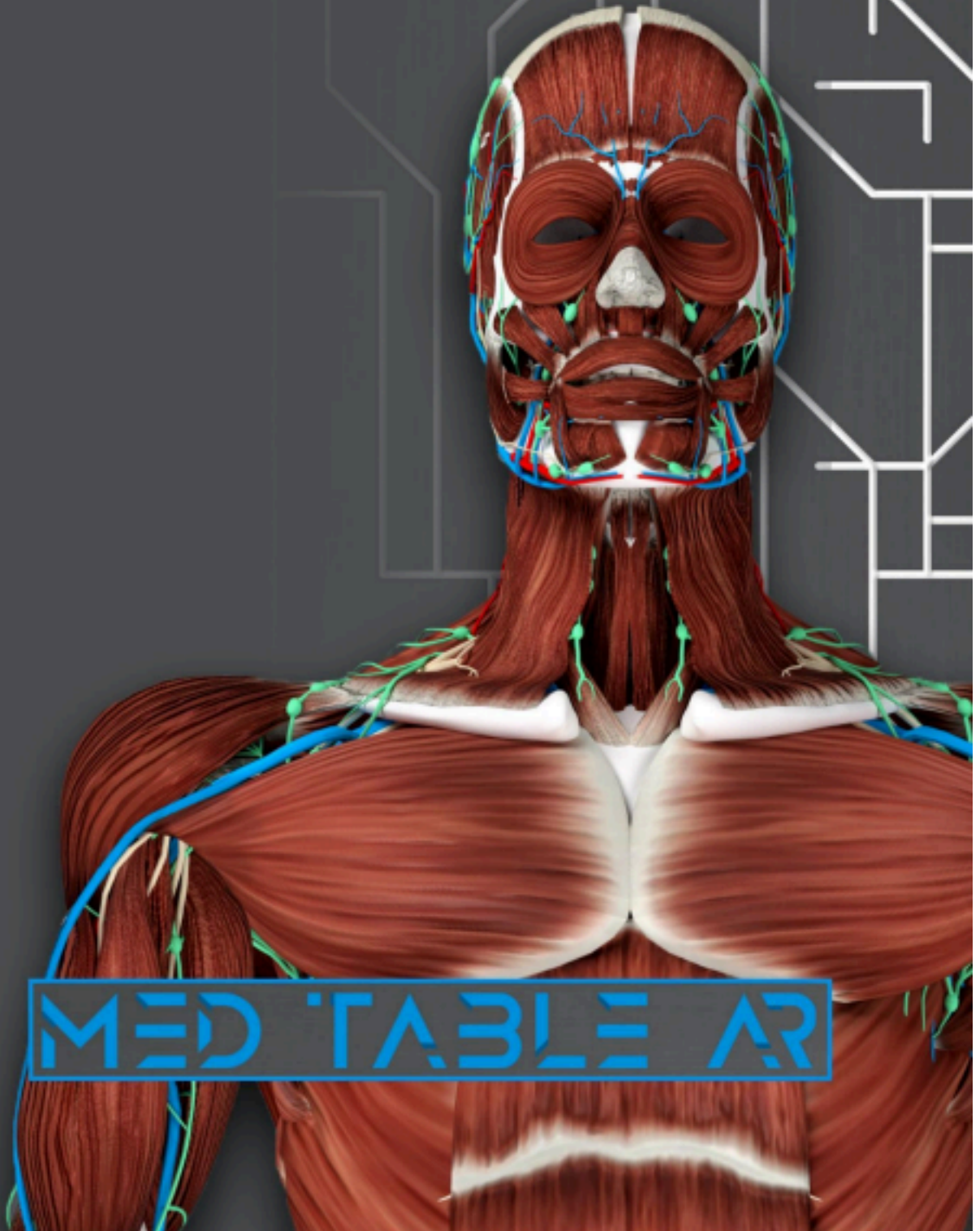


User Manual





About Med Table AR

Thank you for purchasing Med Table AR. Med Table AR allows students to learn and explore human anatomy on a full-sized body without the mess, odor, or disposal of a real cadaver. Students can use the provided tablets to discover and test their anatomical knowledge while working individually or collaboratively with their classmates. Just point the tablets at the MedTable AR mat to start the adventure!

This is an Augmented Reality (AR) application. It uses the tablet's camera to “recognize” image targets and composite virtual reality imagery into the camera image. The user has 360° of interaction around the table while learning anatomy from a life-sized model of the human body.

Program Information

Med Table AR will come pre-loaded on your set of tablets within the kit. Start the application by tapping on the Med Table AR app icon. Once the program loads, can choose to explore either Body Systems or Body Organs.

Body Systems: Body Systems allows the user to hide and several systems that make up the human body. can select anatomical objects layers to discover each system, , and information about each system. A Quiz mode will hide the names of each and allow the user to select from 3 multiple-choice answers to test their knowledge of each system! Also, layers can be toggled on off or “locked.” Locked systems are still visible but are no longer selectable by tapping with a finger. This will allow the user to reference the layer still, but still interact with hard-to-reach parts!

Here is a list of all the Body Systems present in Med Table AR:

- Integumentary
- Muscles
- Skeletal System
- Circulatory System
- Respiratory System
- Digestive System
- Nervous System
- Lymphatic System

Body Organs: Body Organs presents major body organs for more prominent display and deeper learning. Selecting a Body Organ from the Right-Side Menu will allow the user to see a larger than standard model of that organ. Each Body Organ has its own set of interactions, so try each one! Below is a list of each major Body Organ scene and activities.

Heart

- Two toggleable models for both animation and dissection functionality
- Functional animation shows blood flow through the heart chambers and the whole circulatory system.
- Discover and Quiz Modes

Brain

- Dissectible
- Discover and Quiz Modes

Lungs

- Dissectible
- Discover and Quiz Modes

Kidney

- Dissectible
- Discover and Quiz Modes

Liver

- Dissectible
- Discover and Quiz Modes

Integumentary Cross-section

- Dissectible
- Discover and Quiz Modes

Physical Setup

Unroll the MedTable AR mat on a large table. The dimensions are 29" x 65". Make sure you place the mat on the table, bed, or floor so that it lies flat and the edge does not hang off the edge. The Med Table AR app must see the full image without significant bumps. Users can stand around the mat and still get the same great experience. If you need to clean the mat, use a damp cloth or paper towel. Do not use harsh cleaners or bleach products. To clean the tablets, use an lens cloth and screen cleaning spray.

User Interfaces

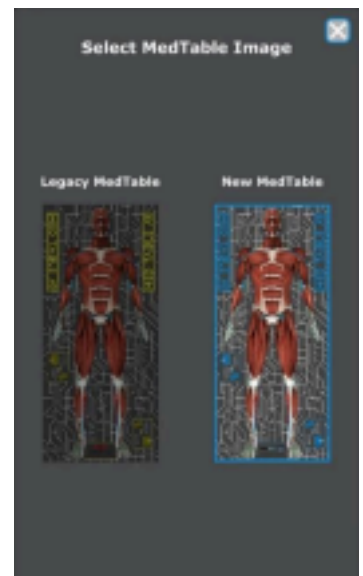
To interact with the app, use a single finger tap to select buttons or AR content. Selected models will turn blue, and the name of the selected will be displayed at the top of the screen.

The Top Menu displays the name of the selected in the body. tap on the Information [i] button, it will toggle a panel that gives general information about the currently selected body part.

Main Menu

In the Main Menu's Settings, users can switch their mat image between Legacy and New versions based on the mat that came with their system. Ensure the correct mat selected for optimal tracking and user experience.

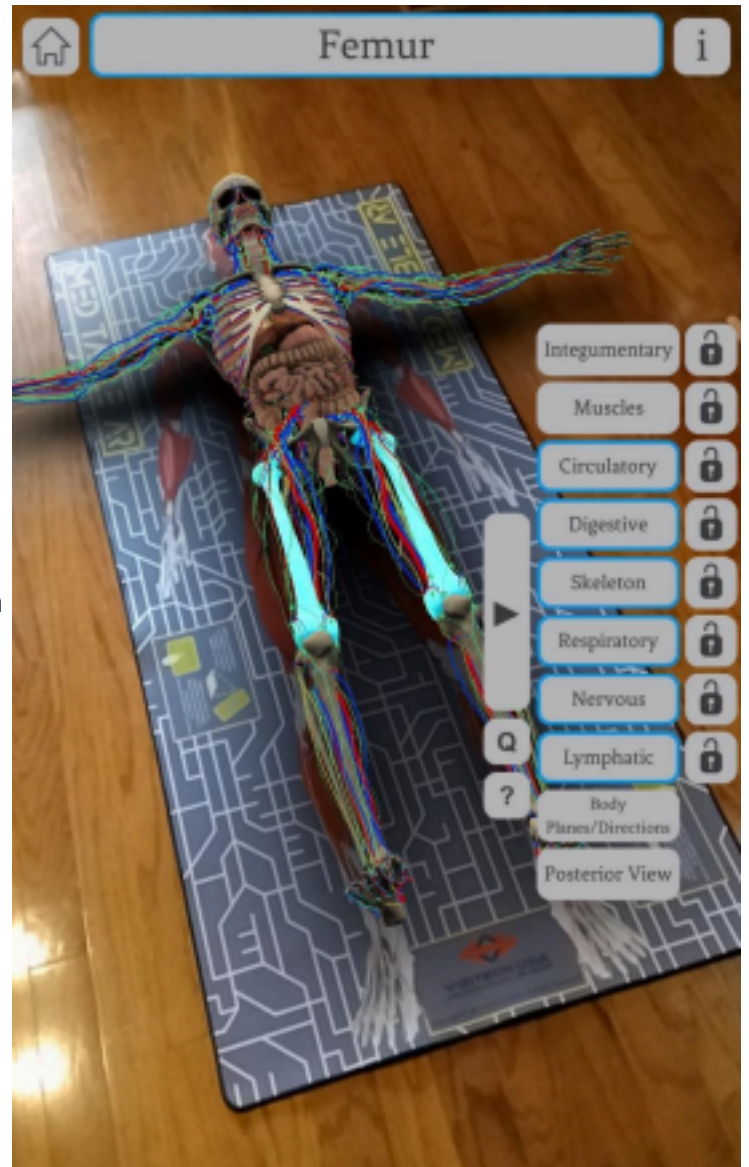
Updating the app is also done through the settings. To ensure the app is up-to-date, tap "Check for Updates" and select "Update Now" to install the latest version.



Body Systems User Interface

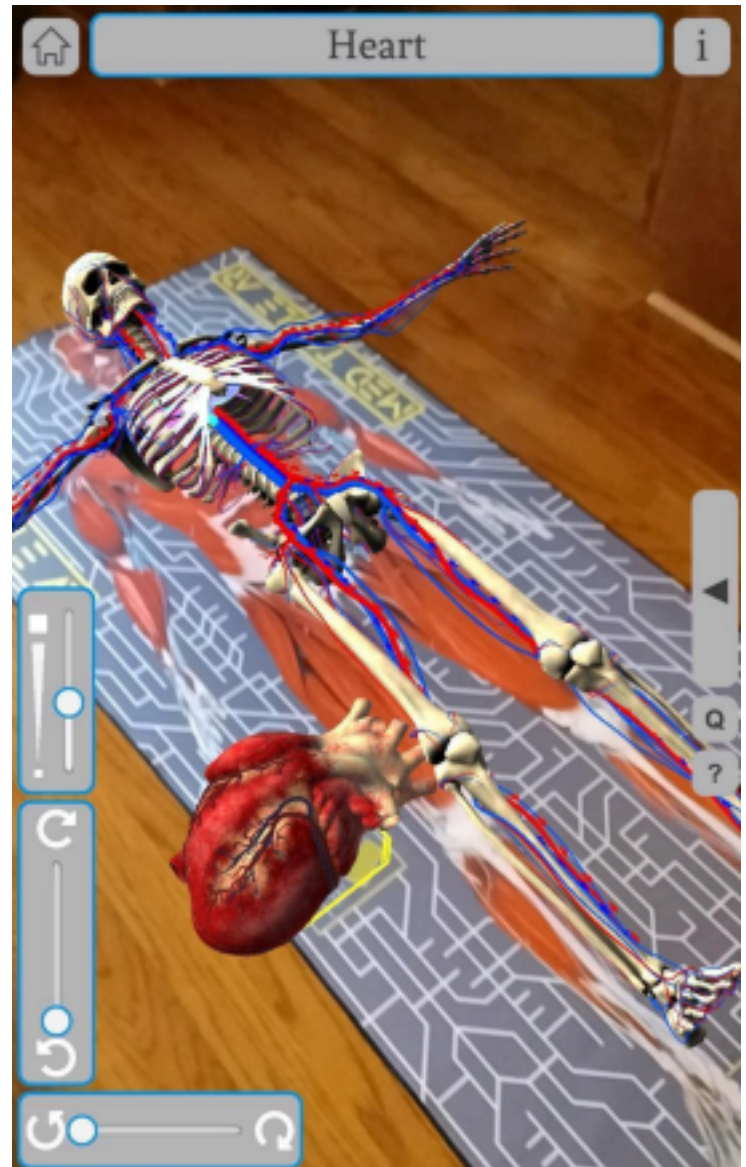
The Right-Side Menu will show users a selection of models to interact with and view. In the Body Systems module, the Right-Side Menu will show all the available systems for discovery. Tap a system button in this menu to toggle the visibility of that system on the Table Tag. A Body System that has a light-blue border is viewable on the Med Table Mat. A Body System that has a light-blue border can have all, none, or any combination of systems active at any time. Beside each system button is a Lock toggle button. When lock a system, no longer able to tap to interact with its model content. The user can still turn the visibility of a locked system on and off. The Locked feature allows a body system to remain visible while the user views other systems. This makes selecting active system parts that the Locked System might otherwise occur easier.

The Body Planes/Directions button toggles the display of medical terms associated with the body's planes and directions. In both modules, the Posterior View button flips the body over on the table mat. Tap this button again to return the body to its anterior position.



Body Organs User Interface

The right-side menu in the Body Organs module displays organs to dissect or view. Tapping a button will move that organ from its position in the body to your active workspace, indicated by the yellow square on the table. A lingering blue shape of the organ will remain in the body to reference its location and orientation. Only ONE organ can be active at a time. Tapping on another organ will unload current organ and load in the new one. progress of dissection will remain on organs you unload in this fashion. Tap the Reset Organ Parts to reset the organ's starting configuration. The Organ system includes a Right-Side Menu button labeled 'Toggle Scale and Rotate.' Pressing this button reveals a scaling slider and two separate sliders for adjusting rotation along the x and y axes. These controls allow users to scale and rotate the active organ with precision.



Quiz Menu

The Q button on the Right-Side Menu represents the Quiz Menu. When active, it will turn green. A new menu in the Body Systems module will pop up in the middle of the screen. Tap on any one of the Systems listed and then select DONE. The Quiz menu will disappear, and quiz has begun! In the Body Organs module, tapping the Q quiz button will instantly start the quiz for the loaded organ. If unload the organ in quiz mode, will lose quiz progress without a warning dialogue.

In Body Systems Quiz mode, only the selected Body System quiz can be tapped. All other Body Systems are forced into LOCKED mode, but can still toggle their visibility on and off. When you tap on a system object, it will highlight in blue, but the name at the top will be ??? and the user will be presented with three multiple-choice answers. The CORRECT answer will leave the selected object GREEN. The INCORRECT answer will leave the object chosen RED. The user can subsequently reselect any object, whether correct or incorrect, and choose from the multiple-choice answer again.

The quiz progress is displayed below the large Q button. It will show the number of CORRECT answers from the total number of interactive objects in that Body System. Changing a GREEN correct answer to a RED incorrect answer will also reflect in the quiz progress.

Ending the Quiz or selecting a new Body System Quiz will pop up a menu informing the user that doing so will remove their progress in the current quiz. Cancel will resume the current quiz. Confirm will end the current quiz and start fresh with any newly selected Body System quiz.

